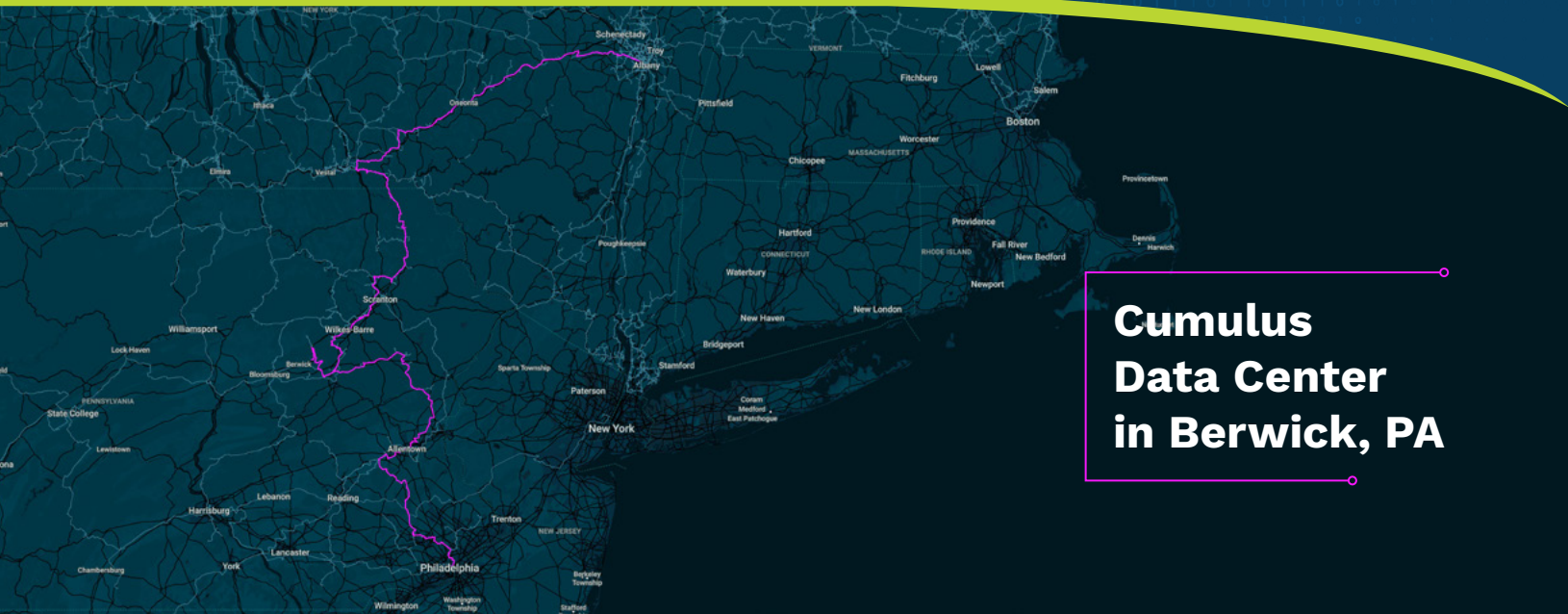


# True Network Diversity out of Cumulus Data Center in Berwick, PA

Add reliability as you grow your network with FirstLight's geodiverse routes to major east coast cities.








## Cumulus Data Center in Berwick, PA

### There is no such thing as too much diversity!

Cumulus Data Center in Berwick features an inexhaustible, highly reliable power source (nuclear), ideally suited to today's high network reliability and performance expectations. Unfortunately, as with chains, a network is only as strong as its weakest link. As bandwidth demand continues to grow, mitigating exposure to long-haul network impairment and outage scenarios is mission critical to avoid congestion and out-of-service conditions.

That's why FirstLight designed a straight fiber route that ensures true path diversity, while connecting your data to key east coast destinations like Ashburn, Binghamton, Buffalo, Boston, NYC, Newark and Secaucus. Avoiding common choke points and deliberately going "off the beaten path" of common throughways and railroad rights-of-way enables us to offer a geographically diverse alternative to traditional fiber providers. And these routes are interconnected to FirstLight's 650 central offices, giving you great flexibility in designing a connection across our 25,000-mile fiber network that is tailored to your needs.

### Additional Unique Routes Include

-  **Lynn Landing to Boston**
-  **Boston to Albany**
-  **Boston to Halifax**
-  **Montreal to Boston, New York or Newark**
-  **Albany to New York**

## Beyond Diversity

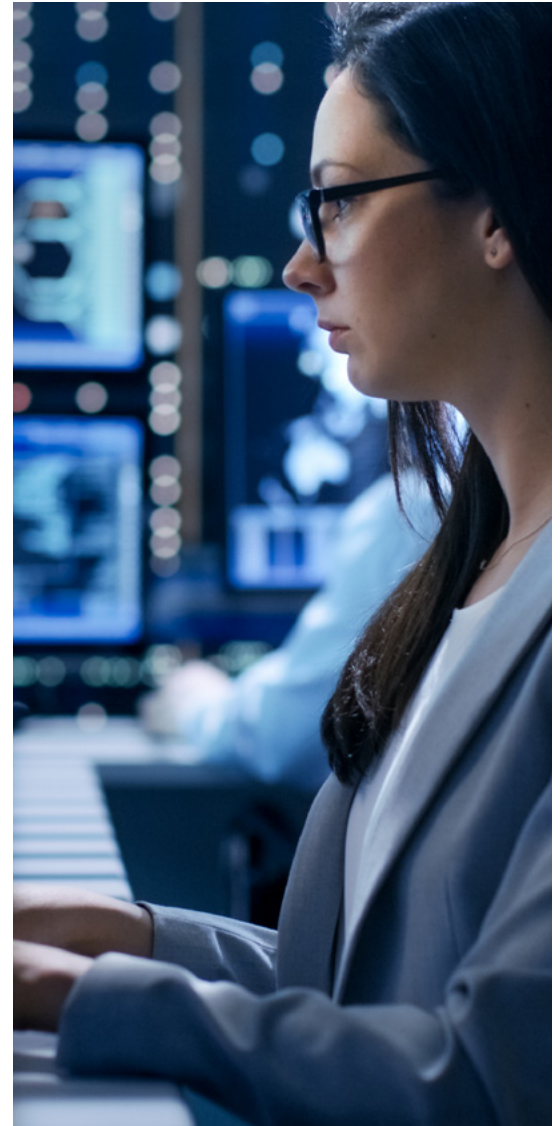
Having geographically diverse routes is key to a resilient network. So is having a nimble and flexible provider who will work with you to design, deploy, and quickly restore services if ever there is an issue. FirstLight is committed to transparency and accountability – from the consultant advising you on the best solution, to the local splicer who is always ready to ensure you have the best experience. Our state-of-the-art fiber network was built to be scalable and robust.

## Cumulus Data Center, Berwick Route Highlights

- New routes connecting to Ashburn, Binghamton, Buffalo, Boston, NYC, Newark and Secaucus
- In-region operations and repair team ready for fast deployment
- Lit services or dark fiber<sup>1</sup>
- 100 – 400 Gbps
- Corning SMF-28e+ glass which conforms to IEEE's G.652.D, the gold standard for terrestrial transmissions<sup>2</sup>

<sup>1</sup> Check availability, some routes may only be available for lit or dark fiber services.

<sup>2</sup> Available on the following routes: Lynn Landing to Boston, Boston to Albany, Cumulus Data Center Berwick, PA and Albany to NYC.



## Ready to Get Started?

Explore how **FirstLight's unique routes** fit into your resiliency plan.



Connect with us today at [firstlight.net](https://firstlight.net)