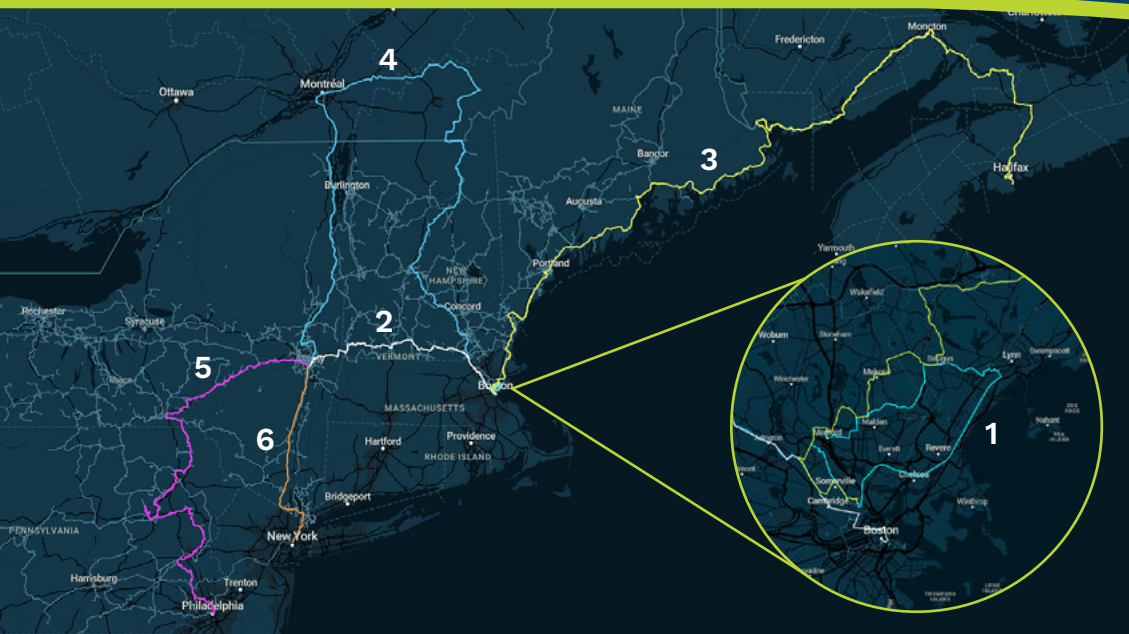


The Path to True Network Diversity

Add reliability and grow your network with FirstLight's wholesale routes in the Northeastern U.S. and Canada.









- 1. Lynn Landing to Boston
- 2. Boston to Albany
- 3. Boston to Halifax
- 4. Montreal to Boston, New York or Newark
- 5. Cumulus Data Center, Berwick, PA
- 6. Albany to New York

There is no such thing as too much diversity!

Network reliability and performance expectations have never been higher. As bandwidth demand continues to grow, mitigating exposure to long haul network impairment and outage scenarios is an essential part of the capacity planning discipline. Cloud computing, data center synchronization and the growing demand for high-definition video streaming all share a low tolerance for congestion and out-of-service conditions. Unfortunately, finding unique routes in the Northeastern United States can be challenging.

That's why FirstLight designed unique routes that ensure true path diversity, protecting your critical network infrastructure, so a fiber cut does not become a catastrophic outage. Avoiding common choke points and deliberately going "off the beaten path" of common thoroughways and railroad rights-of-way enables us to offer a geographically diverse alternative to the traditional fiber providers. And, these routes are interconnected to FirstLight's 650 central offices, giving you great flexibility in designing a connection across our 25,000 mile fiber network that is tailored to your needs.

Unique Routes

-  **Lynn Landing to Boston**
-  **Boston to Albany**
-  **Boston to Halifax**
-  **Montreal to Boston, New York or Newark**
-  **Cumulus Data Center, in Berwick, PA**
-  **Albany to New York**

Beyond Diversity

Having geographically diverse routes is key to a resilient network. So is having a nimble and flexible provider who will work with you to design, deploy and quickly restore services if ever there is an issue. FirstLight is committed to transparency and accountability—from the account executive and sales engineer advising you on the best solution, to the local splicer who is always ready to ensure you have the best experience. Our state-of-the-art fiber network was built to be scalable and robust.



In-region operations and repair team ready for fast deployment



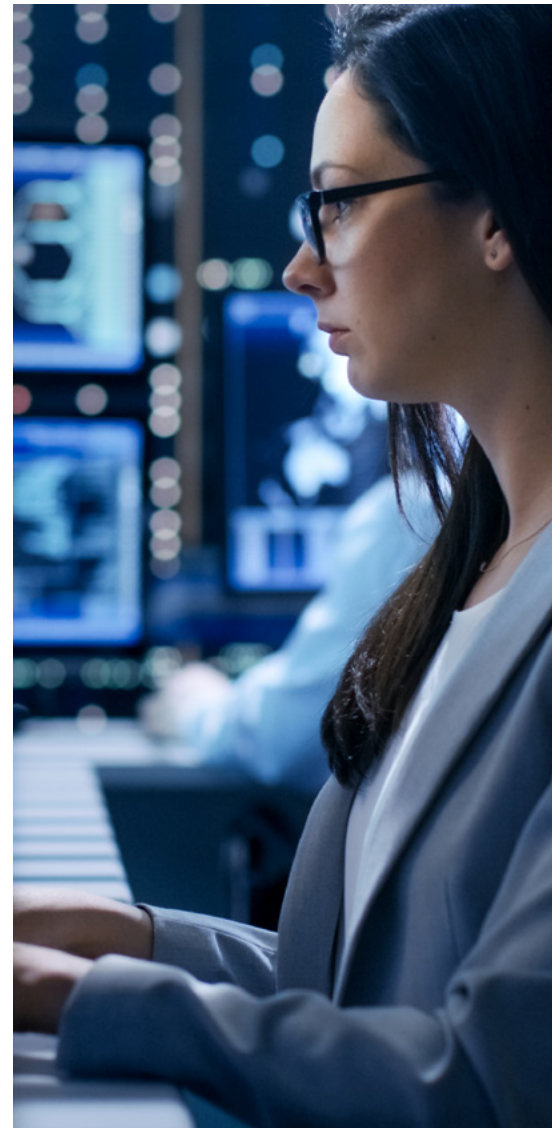
Lit waves or dark fiber¹



100 – 400 Gbps



Corning SMF-28e+ glass which conforms to IEEE's G.652.D, the gold standard for terrestrial transmissions²



¹ Check availability, some routes may only be available for lit or dark fiber services.

² Available on the following routes: Lynn Landing to Boston, Boston to Albany, Cumulus Data Center Berwick, PA and Albany to NYC.

Ready to Get Started?

Explore how **FirstLight's unique routes** fit into your resiliency plan.



Connect with us today at firstlight.net