

# Data Center | Tech Park

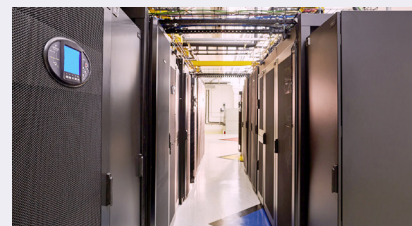
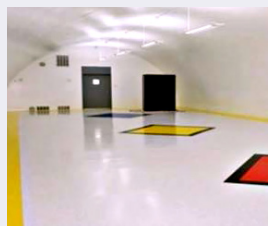
## Romulus, NY | FirstLight Tech Park

**Centrally located in Western NY at the former Seneca Army Depot**

*Ensure world-class enterprise security and business continuity for your mission-critical business operations.*



FirstLight Data Centers have been designed with best of breed technologies and transport provided on our own geographically diverse fiber optic systems. Whether you are looking for a colocation solution close to home or one that is a safe distance away from your corporate location, FirstLight has the solution for you.



FirstLight Tech Park has over 60 blast-hardened ground-level earth-bermed storage bunkers and is an ideal location for the development of data centers, disaster recovery facilities, and other high-technology facilities requiring a secure environment.

### Data Center Specifications

#### Network

- Carrier grade infrastructure
- Redundant, diversely routed Internet connections up to 100 Gbps with available private peering to FirstLight's Tier 2 Northeastern Network
- Dedicated private line EPL, EVPL, and E-LAN (Protected or unprotected) connections up to 100 Gbps

#### Compliance

- SOC 2 Type 2 certified
- HIPAA Compliant



#### Power

- 120 and 208V three phase AC power feeds
- A & B UPS
- Commercial power with A & B power feeds to every rack available
- Generator protected
- Full auto-transfer switching system active and tested
- Regular generator maintenance & load testing
- Cooling: N+1 HVAC cooling
- Rack ATS available

#### Benefits

- Up to 100 Gbps connectivity to FirstLight's fiber optic network
- Colocating with FirstLight reduces capital expenditures
- Leverages the experience of our talented team, allowing you to avoid deployment and service headaches associated with building it yourself
- Redundant infrastructure ensures a reliable networking, power, and physical environment
- Cost-effective business continuity solution
- Space and power available to speed time to market

#### Safety and Security

- 24x7x365 environmental monitoring
- 24x7x365 video recording
- Fully alarmed and monitored
- Security cameras throughout facility
- Fire suppression system
- Card key access control
- Reinforced concrete with 13' ceilings
- Iron doors with steel outer cages
- Triple perimeter fences